



WASTEQUIP

265X-WQ-SC & 265X-WQ-HT SEALPAK™



With this High Capacity space saving Self Contained Compactor, a customer's liquid retention worries are as good as "sealed"

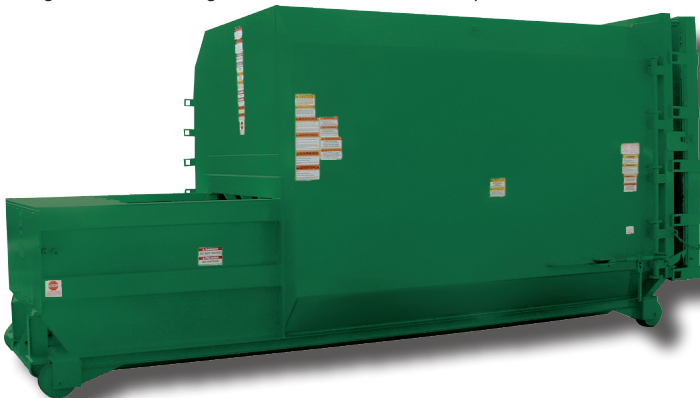
- 10" Ram penetration-more than most other compactors
- 12" inclined sump allows easier discharge of wet or dry waste
- Easy access for maintenance and cleaning
- Twin crossed cylinder engineering provides optimal performance in confined areas
- Heavy duty 1/2" floor plate and 1/2" ram bottom

On site waste compaction made simple and quick

As the most dynamic self contained unit in the marketplace, the Wastequip 265X-Sealpak™ incorporates good sense with tested customer feedback. This sealed unit accepts solid and liquid waste and controls leakage, odors, and insect/rodent concerns. The equally impressive hydraulically operated tailgate unit offers a customer the flexibility to install this self contained container into a chute or dock application and avoid additional charges incurred through a standard "turn around" operation.

265X is a powerhouse

Powerful twin "scissor" cylinder compactor saves space while maximizing container capacity. Built with a lower profile sump and greater ram penetration this unit is choice for wet waste environments, but also work well for dry material. This heavy duty, performance engineered unit is built for trouble-free endurance. Warranty is 3 year structural / 2 year components / and 1 year labor.

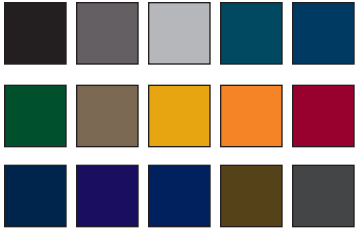


WASTEQUIP - SELF CONTAINED COMPACTOR, MODEL 265X-WQ-SC & 265X-WQ-HT

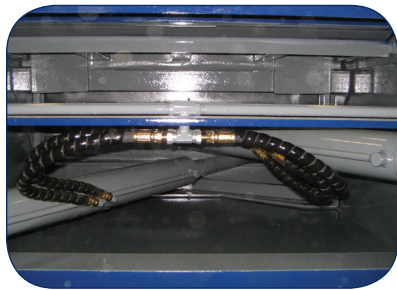
265X-WQ-SC & 265X-WQ-HT SEA

High capacity, space saving compactor saves money

Color options



265X-WQ-SC shown installed with full enclosure



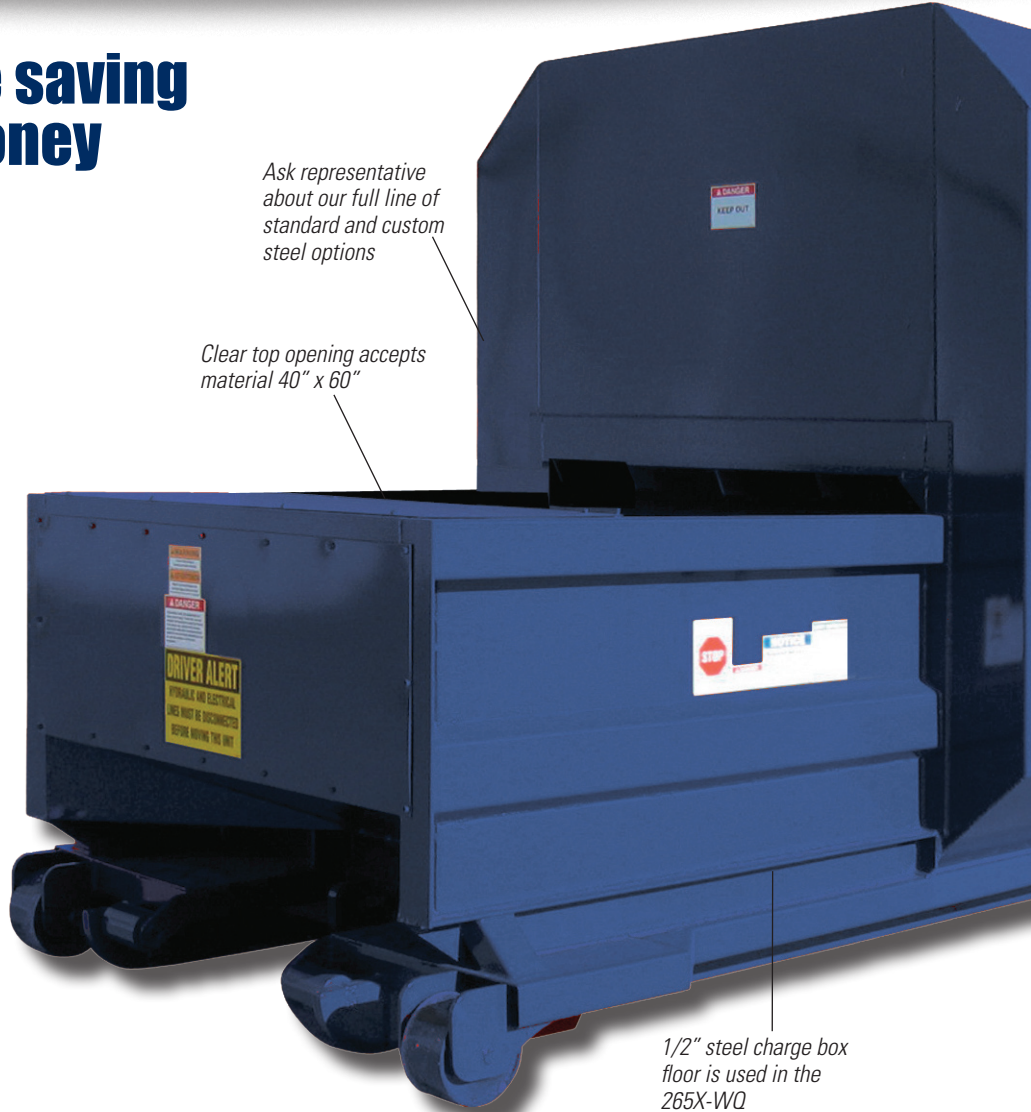
The hydraulically operated crossed scissor configuration conserves space and offers an aggressive 10" of ram penetration.

Model 265X-WQ shown with integrated cart dumper option



Ask representative about our full line of standard and custom steel options

Clear top opening accepts material 40" x 60"

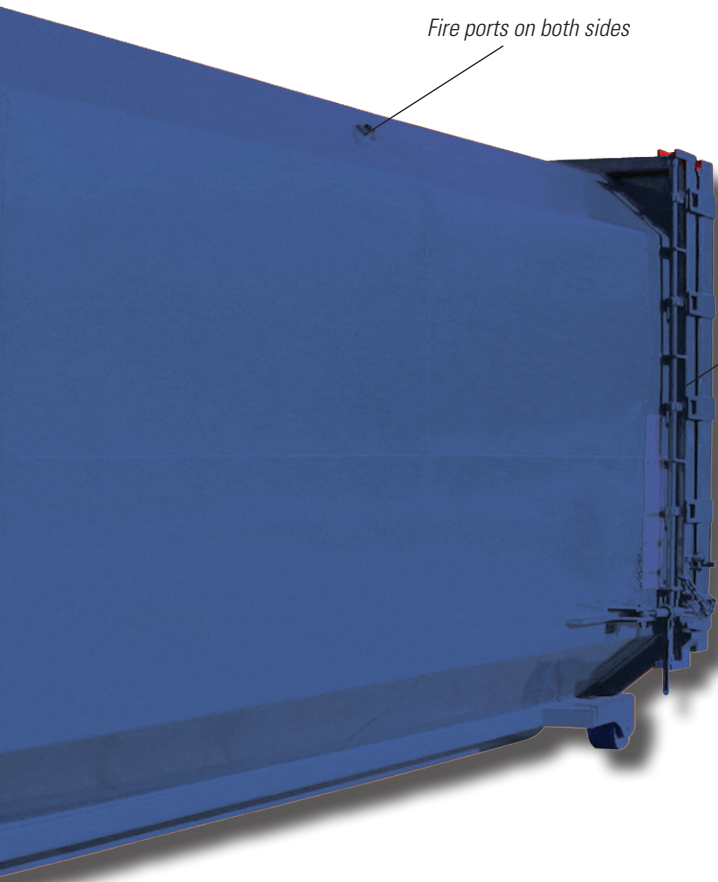


1/2" steel charge box floor is used in the 265X-WQ

Crossed cylinder design and extended rear feed hopper allows customer to load this unit from a dock door without ever leaving the dock. (Shown here with plastic lids & interlock)

Optional hydraulically operated lid for 265X-WQ can be used to restrict unauthorized access and limit exposure to the elements.

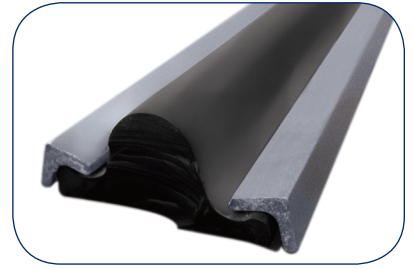




Fire ports on both sides

Driver friendly single ratchet assembly for dump door.

Heavy duty T-Style seal is anchored on both sides and built for liquid retention. The standard seal closes off the "Full Door" to help prevent the escape of odor.

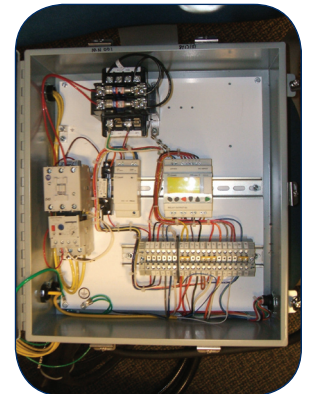


Built on hinge side modification system allows optimal "as necessary" adjustment for leakage.



More than just a control box. This UL Approved control panel offers safety, simplified operation and security. All Wastequip operator controls are wired for 24V power, not 120V. This sharply increases operator safety if moisture ever diverts electricity. The NEMA 4 rating for the control panel and operator controls ensures superior protection from harsh environments.

Flexibility of scheduling required maintenance can be quickly accomplished by the added an hour meter which monitors exact unit usage.



The tamper resistant key operated controls promote a safer environment and ensures simplicity for operators.



Optional drip proof break away disconnects dramatically reduce the possibility of damage to the power unit.



12" inclined sump allows easier discharge for wet or dry material.

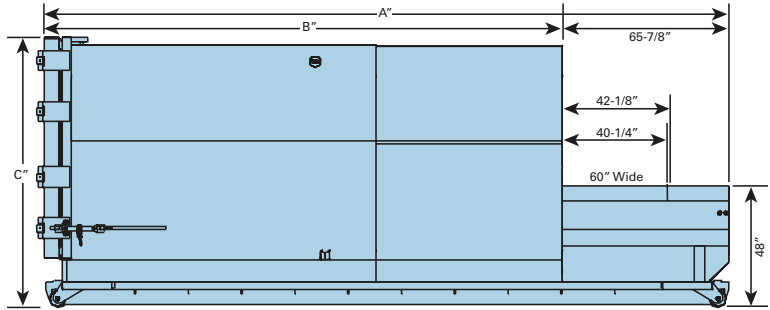


Here is a 265X loaded through a weather enclosure in cooperation with a shredder at a bank where control of records and waste is paramount. This design creates a secure environment for information and the external climate.



265X-WQ-SC & 265X-WQ-HT SEALPAK™

265X	A Overall Length	B Container Length	C Overall Height	Width
15 cu yds	160"	86 3/8"	90"	102"
20 cu yds	200"	126 3/8"	90"	102"
25 cu yds	215"	141 3/8"	104"	102"
30 cu yds	245"	171 3/8"	104"	102"
35 cu yds	275"	201 3/8"	104"	102"
39 cu yds	296"	222 3/8"	104"	102"



265X is available in six sizes; 15, 20, 25, 30, 35 and 39 cu yds

Specifications

Charge Box	Wastequip rating Wastec rating Charge box width Charge box length	2.0 cu yds 1.31 cu yds 60.00" 40.00"
Ram Details	Face plate Ram base Ram top Ram sides Ram height	1/2" steel w/ 5/8" stiffener plates 1/2" flat bar w/ 3' structural channel 1/4" steel plate w/ 5 x 3-1/2 angle support Framed with 3' structural channel 26.00"
Packer Details	Floor plate Sides Top rail Breaker bar Sump	1/2" floor plate w/with 2 - 6" channel supports 1/4" side plate sheets with 6" x 3" formed steel stiffener 6" x 3" x 3/16" formed steel stiffener 6" x 6" x 3/4" angle steel 12" inclined sump for easier discharge of wet or dry waste
Electrical Details	Electric motor Power box Operator Control Station Automated cycle operation	10 hp T.E.F.C., 208/230/460, 3 phase, 60 HZ. (optional 575V) Guardian NEMA 4 rated, UL Listed NEMA 4 Rated 24 Volt (not 120 volt) Turn key switch-ram extends, retracts and stops automatically
Hydraulic Details	Pump Ram penetration Cycle time Hydraulic cylinders Hydraulic oil tank Power Unit location	11.7 gpm 10" 33 seconds (2) - 4" Bore 2.5" Rod 25 gal Remote
Hydraulic Performance	Normal ram face pressure Normal ram psi Normal Operating Pressure Maximum ram face pressure Maximum ram psi Maximum Operating Pressure	39,800 lbs 25.00 psi 1850 psi 49,500 lbs 31.73 psi 2300 psi

Dec © 2008 Wastequip, all rights reserved. Specifications are subject to improvement without notice

Caution

This equipment should be operated by properly trained personnel. Operators should become familiar with OSHA, ANSI and any other applicable standards or laws for using this equipment. Improper use, misuse, or lack of maintenance could cause injury to people and/or property. Photos used in the literature are illustrative only. We assume no liability or responsibility for proper training/operation of equipment not manufactured by Wastequip. We reserve the right to make changes at any time without notice. Information contained within this literature is intended to be the most accurate available at time of printing.



WASTEQUIP

Nationally known for personal service

Phone 877-468-9278

Fax 651-437-2272

Email-sales@wastequip.com

www.wastequip.com