



# WASTEQUIP

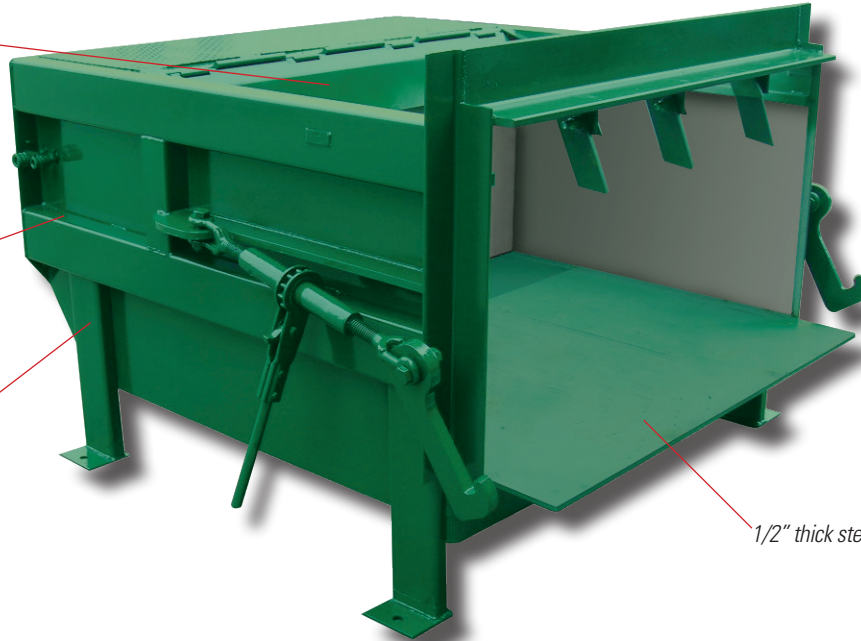
## 265X-WQ Short Pack

Wide 60" x 40" clear top opening for large waste

Reinforced 1/2" steel ram plate is powered by twin scissor action hydraulic cylinders

Maximum ram face pressure at 62,666 lbs at 2300 psi

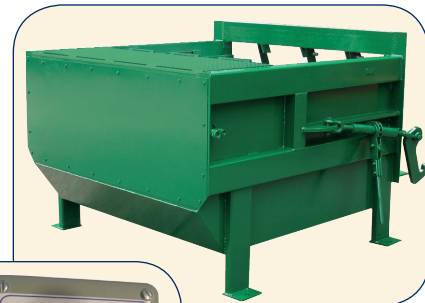
1/2" thick steel floor plate



### Short Pack 265X is perfect for tight spaces

#### Short Pack 265X Stationary Compactor Features, Advantages and Benefits

- Short Pack 265X is less than 66" in length - a real space saving stationary compactor!
- Heavy duty 1/2" thick steel floor plate and ram bottom extends your compactor's life cycle and reduces your replacement costs
- Short Pack 265X is fast with a 43 second cycle time allowing your employees to get back to work
- Powerful compaction with over 62,000 lbs. of force to maximize your payload
- Hydraulic twin cylinders are configured in a crossed "scissor" design to save you additional space over other models.
- Wastequip's Guardian Control System works with all compactors and offers the following features
- Free "Packout/Override" feature allows you to extend your use after you reach 100% capacity
- Guardian Control System prevents "False Full" readings by requiring two consecutive full signals before shutting down
- Guardian 24 volt operator controls are safer to use and maintenance than 110 volt systems
- Guardian's Self Diagnostic system displays system pressure, door ajar, and other routine messages allowing you to keep your compactor running efficiently



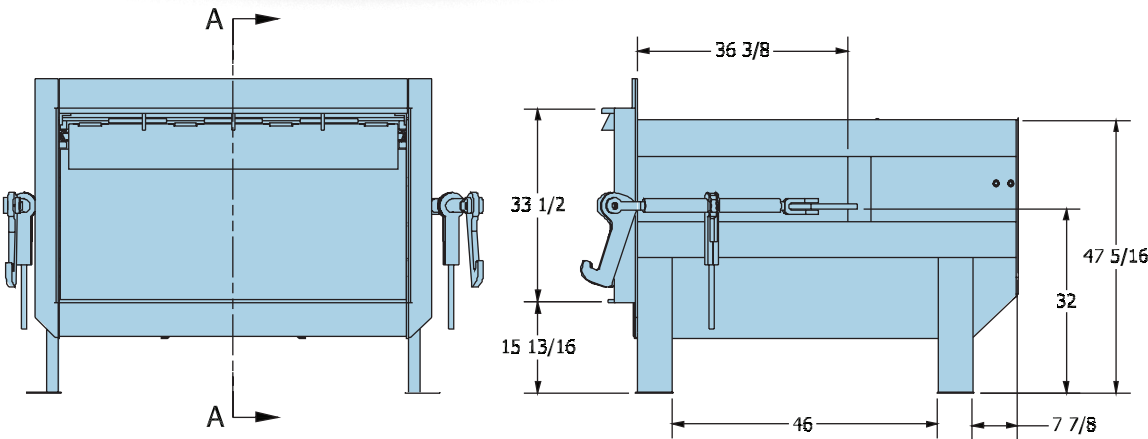
Guardian Control System

STATIONARY COMPACTOR, MODEL 265X-WQ SHORT PACK

# 265X-WQ Short Pack

Short Pack stationary compactor is a real space saver

**Wastequip offers financing and leasing programs**



## Specifications

### Charge Box

Wastequip rating - 2.0 cubic yards  
 Wastec rating - 1.31 cubic yards  
 Charge box width - 60"  
 Charge box length - 40"  
 Weight with Power Unit - 4,054 lbs

### Ram

Ram height - 26"  
 Face plate - 1/2" steel w/ 5/8" stiffener plates  
 Base plate - 1/2" flat bar w/ 3" structural channel  
 Top plate - 1/4" steel plate w/ 5 x 3 1/2 x 1/2" angle support  
 Side plates - Framed with 3" structural channel

### Packer

Floor plate - 1/2" thick steel with 6" channels supports  
 Sides - 1/4" side plate sheets with 6" x 3" horizontal tube stiffeners  
 Top rail - 6" x 3" x 3/16" tube  
 Breaker bar - 6" x 6" x 3/4 angle steel  
 Top deck - 12 ga. steel is standard

### Electrical

Electric motor, fan cooled - 10 hp T.E.F.C. (Totally Enclosed Fan Cooled) 3 phase  
 Motor service factor - 1.00  
 Motor RPM - 1800  
 Voltage - 208/230/460, 3-phase 60 Hz  
 Power box - UL rated, NEMA 4 rated  
 Operator control station voltage - Guardian 24 volt  
 Automated cycle operation - Turn key switch-ram extends, retracts and stops automatically

### Hydraulic

Pump - 11.70 gpm  
 Ram penetration - 10"  
 Normal ram face pressure - 50,405 lbs  
 Normal ram psi - 1850 psi  
 Normal operating pressure - 25.00 psi  
 Maximum ram face pressure - 62,666 lbs  
 Maximum ram psi - 2300 psi  
 Maximum operating pressure - 40.51 psi  
 Hydraulic cylinders - Two in scissor configuration-4.5" bore, 2.5" rod & 36.0" stroke  
 Pump type - Fixed gear  
 Hydraulic oil tank - 25 gal  
 Cubic Yd per Hr - 110  
 Power Unit location - Remote  
 Cycle time - 43 seconds

### Rolloff container recommendations

Heavy duty containers up to 40 cu. yds.  
 Rated at 70,000 lbs.

## Standard features

- Indicator light signals full container
- Control panel is UL listed
- Final packout pressure override
- 1 3/8" ratchet binders with 1" hooks



265X-WQ with side hopper option

## Standard color options



\* Contact with your local plant for exact colors available to you



**WASTEQUIP**

Nationally known for personal service

Phone 877-468-9278

Email-sales@wastequip.com

www.wastequip.com

Wastequip serves North America from over 20 locations with quality, containers, roll off hoists, self-dumping hoppers, compactors, balers, trailers and tarps for companies in environmental preservation and material handling

May 07 © 2009 Wastequip, all rights reserved. Specifications subject to improvement without notice. Equipment displayed should be operated by properly trained personnel. Operators should become familiar with OSHA, ANSI and any other applicable standards or laws for using this equipment. Improper use, misuse, or lack of maintenance could cause injury to people and/or property. Photos used in the literature are illustrative only. We assume no liability or responsibility for proper training/operation of equipment not manufactured by Wastequip. We reserve the right to make changes at any time without notice. Information contained within this literature is intended to be the most accurate available at time of printing.